

PREMIER™

ARCHITECTURAL COLLECTION - PAVERS & SLABS

Premier pavers feature a smooth, refined surface that delivers a clean, contemporary aesthetic. Their minimalist design complements a wide range of styles, offering a versatile solution for both functional and design-driven projects.



PREMIER™

STANDARD SHAPES & SIZES

SHAPE	LENGTH & WIDTH (IMPERIAL)	LENGTH & WIDTH (METRIC)	THICKNESS
36 x 36"	35 1/2 x 35 1/2"	900 x 900mm	3 7/8" (100mm)
24 x 48"	23 13/16 x 47 7/8"	604.8 x 1214.4mm	2 1/2" (63.5mm)
24 x 36" *Available with a false groove at 24"	23 13/16 x 35 13/16"	604.8 x 909.6mm	2" (51mm)
24 x 24"	23 5/8 x 23 5/8"	600 x 600mm	2 3/8" (60mm)
			2 3/4" (70mm)
24 x 24"	23 13/16 x 23 13/16"	604.8 x 604.8mm	2" (51mm)
22 1/2 x 37 1/2"	22 1/2 x 37 3/8"	570 x 950mm	2 3/8" (60mm)
21 x 35 1/2"	21 1/4 x 35 1/2"	540 x 900mm	2 3/8" (60mm)
18 x 36"	17 3/4 x 35 1/2"	450 x 900mm	2 3/8" (60mm)
			3 7/8" (100mm)
18 x 36"	17 13/16 x 35 13/16"	452.4 x 909.6mm	2" (51mm)
18 x 24"	17 3/4 x 23 5/8"	450 x 600mm	2 3/8" (60mm)
18 x 24"	17 13/16 x 23 13/16"	452.5 x 604.8mm	2" (51mm)
16 x 16"	15 3/4 x 15 3/4"	400 x 400mm	2 3/4" (70mm)
			3 1/8" (80mm)
			3 7/8" (100mm)
15 x 30"	15 x 29 7/8"	375 x 750mm	2 3/8" (60mm)
12 x 24"	11 7/8 x 23 5/8"	300 x 600mm	2 3/4" (70mm)
			3 7/8" (100mm)
12 x 24"	11 7/8 x 23 13/16"	300 x 604.8mm	2" (51mm)
12 x 12"	11 7/8 x 11 7/8"	300 x 300mm	2 3/4" (70mm)
			3 7/8" (100mm)
9 x 9"	9 x 9"	228 x 228mm	2 3/8" (60mm)
8 x 24"	7 7/8 x 23 5/8"	200 x 600mm	2 3/4" (70mm)
			3 7/8" (100mm)
8 x 16"	7 7/8 x 15 3/4"	200 x 400mm	2 3/4" (70mm)
			3 7/8" (100mm)
8 x 8"	7 7/8 x 7 7/8"	200 x 200mm	2 3/8" (60mm)
			2 3/4" (70mm)
7 1/2 x 15"	7 1/2 x 15"	190 x 380mm	2 3/8" (60mm)
			3 1/8" (80mm)

PREMIER™

STANDARD SHAPES & SIZES

SHAPE	LENGTH & WIDTH (IMPERIAL)	LENGTH & WIDTH (METRIC)	THICKNESS
7 x 14"	7 1/16 x 14 3/16"	180 x 360mm	2 3/8" (60mm)
			2 3/4" (70mm)
			3 1/8" (80mm)
6 x 24"	5 15/16 x 23 5/8"	150 x 600mm	2 3/4" (70mm)
6 x 12"	5 15/16 x 11 7/8"	150 x 300mm	2 3/4" (70mm)
			3 1/8" (80mm)
			3 7/8" (100mm)
6 x 6"	5 15/16 x 5 15/16"	150 x 150mm	2 3/4" (70mm)
4 x 16"	3 7/8 x 15 3/4"	100 x 400mm	2 3/4" (70mm)
			3 7/8" (100mm)
4 x 12"	3 7/8 x 11 7/8"	100 x 300mm	2 3/4" (70mm)
			3 7/8" (100mm)
4 x 8"	3 7/8 x 7 7/8"	100 x 200mm	2 3/8" (60mm)
			2 3/4" (70mm)
			3 1/8" (80mm)
3 x 12"	2 15/16 x 11 7/8"	75 x 300mm	3 7/8" (100mm)
2 3/8 x 9 1/2"	2 3/8 x 9 1/2"	60 x 240mm	2 3/8" (60mm)
			2 3/4" (70mm)
Load Lock™ - 12 x 24"	11 7/8 x 23 5/8"	300x 600mm	3 7/8" (100mm)
Load Lock™ - 12 x 12"	11 7/8 x 11 7/8"	300 x 300mm	3 7/8" (100mm)
Load Lock™ - 6 x 12"	5 15/16 x 11 7/8"	150 x 300mm	3 7/8" (100mm)
			6" (150mm)
Load Lock™ - 4 x 12"	3 7/8 x 11 7/8"	100 x 300mm	3 7/8" (100mm)
Metro™ - 5 x 10"	5 x 10"	127 x 254mm	2 3/4" (70mm)
Nordic Cobble™	3 5/8 x 3 3/4"	89.9 x 94mm	2 3/8" (60mm)
Trapezoid - 9 x 15"	9 x 15"	228 x 381mm	3 1/8" (80mm)
Hex™ - 8"	7 7/8 x 7 7/8"	200 x 200mm	2 3/4" (70mm)
Optiloc™	10 1/4 x 10 1/4"	260 x 260mm	3 1/8" (80mm)
AnchorLock™	8 7/8 x 8 7/8"	225 x 225mm	3 1/8" (80mm)
Artline™ Platform	4 7/8 x 6 3/4, 4 7/8 x 10 3/8, 4 7/8 x 13 3/8, 4 7/8 x 17 3/4, 7 1/2 x 8 7/8, 7 1/2 x 13 3/8, 7 1/2 x 17 3/4"	125 x 169, 125 x 262.5, 125 x 337.5, 125 x 450, 187.5 x 225, 187.5 x 337.5, 187.5 x 450mm	2 3/4" (70mm)

PREMIER™

STANDARD SHAPES & SIZES

SHAPE	LENGTH & WIDTH (IMPERIAL)	LENGTH & WIDTH (METRIC)	THICKNESS
Metro™ Platform	5 x 10, 10 x 10, 10 x 15"	127 x 254, 254 x 254, 254 x 380mm	2 ¾" (70mm)
Random Platform 1	7 ½ x 15, 15 x 15, 15 x 22 ½"	190 x 380, 380 x 380, 380 x 570mm	2 ⅜" (60mm)
			3 ⅛" (80mm)
Random Platform 2	7 x 14, 14 x 14, 14 x 21"	180 x 360, 360 x 360, 360 x 540mm	2 ⅜" (60mm)
			3 ⅛" (80mm)
Tribeca Cobble™ Platform	5 x 6 ⅞, 5 x 9, 5 x 12"	130 x 175, 130 x 230, 130 x 305mm	2 ¾" (70mm)

PREMIER™

PERMEABLE SHAPES & SIZES

SHAPE	LENGTH & WIDTH (IMPERIAL)	LENGTH & WIDTH (METRIC)	THICKNESS	JOINT SPACING	VOID PERCENTAGE
Eco-Priora™ - 10 x 10"	9 1/2 x 9 1/2"	240 x 240mm	3 1/8" (80mm)	7mm	4.6%
Eco-Priora™ - 5 x 10"	4 3/4 x 9 1/2"	120 x 240mm	3 1/8" (80mm)	7mm	6.8%
Eco-Priora™ - 5 x 5"	4 3/4 x 4 3/4"	120 x 120mm	3 1/8" (80mm)	6mm	12.80%
Permeable - 12 x 12"	11 7/8 x 11 7/8"	150 x 600mm	3 7/8" (100mm)	7mm	4.84%
Permeable - 6 x 24"	5 15/16 x 23 5/8"	150 x 600mm	2 3/4" (70mm)	10mm	6.23%
Permeable - 6 x 12"	5 15/16 x 11 7/8"	150 x 300mm	3 1/8" (80mm)	10mm	10.65%
Permeable - 4 x 16"	3 7/8 x 15 3/4"	100 x 400mm	3 7/8" (100mm)	7mm	10.12%
Permeable - 4 x 12"	3 7/8 x 11 7/8"	100 x 300mm	3 1/8" (80mm)	7mm	8.6%
Permeable - 3 x 12"	2 15/16 x 11 7/8"	75 x 300mm	3 7/8" (100mm)	7mm	10.12%
Treo® - 4 5/8 x 9 1/4"	4 5/8 x 9 1/4"	116.5 x 233mm	2 3/8" (60mm)	7mm	7.8%
Permeable Hex - 8"			2 3/8" (60mm)	6.5mm	4.2%
			3 1/8" (80mm)	10mm	4.2%
Nordic Cobble™	3 5/8 x 3 3/4"	89.9 x 94mm	2 3/8" (60mm)	-	-
Eco-Optiloc™	9 7/8 x 9 7/8"	250 x 250mm	3 1/8" (80mm)	12mm	7.3%
Treo® Platform	9 1/4 x 4 5/8, 9 1/4 x 9 1/4, 9 1/4 x 13 3/4"	233 x 116, 233 x 233, 233 x 349mm	2 3/8" (60mm)	7mm	5.5% avg.
			3 1/8" (80mm)	7mm	5.5% avg.
Thornbury™ Platform	8 1/4 x 6 7/8, 8 1/4 x 13 3/4, 13 3/4 x 16 1/2"	210 x 173, 210 x 350, 350 x 420mm	2 3/4" (70mm)	11-18mm	7.7% avg.
Eco-Line® Platform	3 5/16 x 9 3/8, 3 5/16 x 11, 3 5/16 x 12 1/2, 3 5/16 x 14, 4 1/2 x 11, 14 1/2 x 12 1/2, 4 1/2 x 14"	84 x 237, 84 x 277, 84 x 317, 84 x 357, 114 x 237, 114 x 277, 114 x 317, 114 x 357mm	3 7/8" (100mm)	6.25mm	5.8%
Tribeca Cobble™ Platform	5 x 6 7/8, 5 x 9, 5 x 12"	130 x 175, 130 x 230, 130 x 305mm	2 3/4" (70mm)	9-15mm	5.6% avg.

STANDARD

SHAPE	LENGTH & WIDTH (IMPERIAL)	LENGTH & WIDTH (METRIC)	THICKNESS
12 x 12"	11 ⁷ / ₈ x 11 ⁷ / ₈ "	300 x 300mm	3 ⁷ / ₈ " (100mm)
8 x 8"	7 ⁷ / ₈ x 7 ⁷ / ₈ "	200 x 200mm	2 ³ / ₄ " (70mm)
6 x 12"	5 ¹⁵ / ₁₆ x 11 ⁷ / ₈ "	150 x 300mm	3 ⁷ / ₈ " (100mm)
6 x 6"	5 ¹⁵ / ₁₆ x 5 ¹⁵ / ₁₆ "	150 x 150mm	2 ³ / ₄ " (70mm)
4 x 12"	3 ⁷ / ₈ x 11 ⁷ / ₈ "	100 x 300mm	3 ⁷ / ₈ " (100mm)
4 x 8"	3 ⁷ / ₈ x 7 ⁷ / ₈ "	100 x 200mm	2 ³ / ₄ " (70mm)
			3 ¹ / ₈ " (80mm)
3 x 12"	2 ¹⁵ / ₁₆ x 11 ⁷ / ₈ "	75 x 300mm	3 ⁷ / ₈ " (100mm)
Load Lock™ - 12 x 24"	11 ⁷ / ₈ x 23 ⁵ / ₈ "	300 x 600mm	3 ⁷ / ₈ " (100mm)
Load Lock™ - 12 x 12"	11 ⁷ / ₈ x 11 ⁷ / ₈ "	300 x 300mm	3 ⁷ / ₈ " (100mm)
Load Lock™ - 6 x 12"	5 ¹⁵ / ₁₆ x 11 ⁷ / ₈ "	150 x 300mm	3 ⁷ / ₈ " (100mm)
			6" (150mm)
Load Lock™ - 4 x 12"	3 ⁷ / ₈ x 11 ⁷ / ₈ "	100 x 300mm	3 ⁷ / ₈ " (100mm)
Hex™ - 8"	7 ⁷ / ₈ x 7 ⁷ / ₈ "	200 x 200mm	2 ³ / ₄ " (70mm)
Optiloc™	10 ¹ / ₄ x 10 ¹ / ₄ "	260 x 260mm	3 ¹ / ₈ " (80mm)
AnchorLock™	8 ⁷ / ₈ x 8 ⁷ / ₈ "	225 x 225mm	3 ¹ / ₈ " (80mm)

PERMEABLE

SHAPE	LENGTH & WIDTH (IMPERIAL)	LENGTH & WIDTH (METRIC)	THICKNESS	JOINT SPACING	VOID PERCENTAGE
Eco-Priora™ - 10 x 10"	9 ¹ / ₂ x 9 ¹ / ₂ "	240 x 240mm	3 ¹ / ₈ " (80mm)	7mm	4.6%
Eco-Priora™ - 5 x 10"	4 ³ / ₄ x 9 ¹ / ₂ "	120 x 240mm	3 ¹ / ₈ " (80mm)	7mm	6.80%
Eco-Priora™ - 5 x 5"	4 ³ / ₄ x 4 ³ / ₄ "	120 x 120mm	3 ¹ / ₈ " (80mm)	6mm	12.80%
Permeable - 12x 12"	11 ⁷ / ₈ x 11 ⁷ / ₈ "	300 x 300mm	3 ⁷ / ₈ " (100mm)	7mm	4.84%
Permeable - 3 x 12"	2 ¹⁵ / ₁₆ x 11 ⁷ / ₈ "	75 x 300mm	3 ⁷ / ₈ " (100mm)	7mm	10.12%
Permeable Hex - 8"	8 ¹ / ₁₆ x 8 ¹ / ₁₆ "	205 x 205mm	2 ³ / ₈ " (60mm)	6.5mm	4.2%
			3 ¹ / ₈ " (80mm)	10mm	4.2%
Eco-Optiloc™	9 ⁷ / ₈ x 9 ⁷ / ₈ "	250 x 250mm	3 ¹ / ₈ " (80mm)	12mm	7.3%

SHAPE	LENGTH & WIDTH (IMPERIAL)	LENGTH & WIDTH (METRIC)	THICKNESS
24 x 48"	23 ¹³ / ₁₆ x 47 ⁷ / ₈ "	604.8 x 1214.4mm	2 ¹ / ₂ " (63.5mm)
24 x 36" *Available with a false groove at 24"	23 ¹³ / ₁₆ x 35 ¹³ / ₁₆ "	604.8 x 909.6mm	2" (51mm)
24 x 24"	23 ⁵ / ₈ x 23 ⁵ / ₈ "	600 x 600mm	2 ³ / ₈ " (60mm)
24 x 24"	23 ¹³ / ₁₆ x 23 ¹³ / ₁₆ "	604.8 x 604.8mm	2" (51mm)
22 ¹ / ₂ x 37 ¹ / ₂ "	22 ¹ / ₂ x 37 ³ / ₈ "	570 x 950mm	2 ³ / ₈ " (60mm)
21 x 35 ¹ / ₂ "	21 ¹ / ₄ x 35 ¹ / ₂ "	540 x 900mm	2 ³ / ₈ " (60mm)
18 x 36"	17 ³ / ₄ x 35 ¹ / ₂ "	450 x 900mm	2 ³ / ₈ " (60mm)
18 x 36"	17 ¹³ / ₁₆ x 35 ¹³ / ₁₆ "	452.4 x 909.6mm	2" (51mm)
18 x 24"	17 ³ / ₄ x 23 ⁵ / ₈ "	450 x 600mm	2 ³ / ₈ " (60mm)
18 x 24"	17 ¹³ / ₁₆ x 23 ¹³ / ₁₆ "	452.5 x 604.8mm	2" (51mm)
15 x 30"	15 x 29 ⁷ / ₈ "	375 x 750mm	2 ³ / ₈ " (60mm)
Wind Uplift - 24 x 36" *Available with a false groove at 24"	23 ¹³ / ₁₆ x 35 ¹³ / ₁₆ "	604.8 x 909.6mm	2" (51mm)
Wind Uplift - 24 x 24"	23 ¹³ / ₁₆ x 23 ¹³ / ₁₆ "	604.8 x 604.8mm	2" (51mm)

PREMIER™

COLORS



IVORY



INDIANA BUFF (SRI 61 | SR 0.52)



SS0260



STERLING (SRI 46 | SR 0.41)



LIGHT GREY 0.75%



ALMOND GROVE (SRI 25 | SR 0.25)



FOSSIL (SRI 21 | SR 0.22)



BAVARIAN (SRI 47 | SR 0.42)



SIERRA



RIVER (SRI 40 | SR 0.36)



BEECHWOOD



MOCHA



SANDY BEIGE (SRI 42 | SR 0.38)



CHAMOIS (SRI 46 | SR 0.41)



SS0068



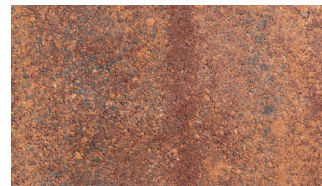
TUSCANY (SRI 32 | SR 0.3)



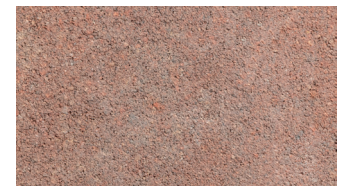
SS0334



HERITAGE BROWN



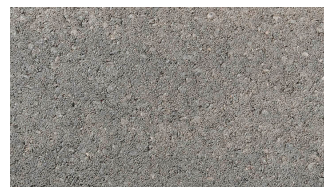
CHARLESTON



AUTUMN RED



RUSTIC RED



NATURAL



NEW YORK BLEND



SS0286

Colors may vary by plant of manufacture. Final product selection should be done with full size samples and mock-ups. Contact your Unilock Representative for details.

UNILOCK®

PREMIER™

COLORS



SS0287



GRANITE FUSION (SRI 29 | SR 0.28)



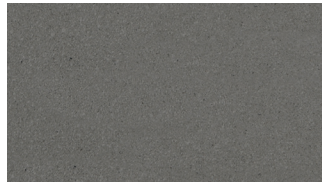
OPAL (SRI 24 | SR 0.24)



SILVER GREY (SRI 37 | SR 0.34)



GRANITE



MEDIUM GREY 2%



SS0381



STEEL GREY (SRI 5 | SR 0.09)



DARK CHARCOAL



BLACK 8%

Colors may vary by plant of manufacture. Final product selection should be done with full size samples and mock-ups. Contact your Unilock Representative for details.

UNILOCK®

TECHNOLOGIES

INCLUDED: EnduraColor™ Face-mix

OPTIONAL: EasyClean™ Integral Factory Sealer

MANUFACTURING STANDARDS

Unilock meets and exceeds ASTM C936 - Standard Specification for Solid Concrete Interlocking Paving Units & C1782 - Standard Specification for Segmental Concrete Paving Slabs using test methods conforming to:

TYPE	ASTM	COMPRESSIVE STRENGTH	WATER ABSORPTION	FREEZE/THAW (49 CYCLES)	FLEXURAL STRENGTH	DIMENSIONAL ACCURACY
Pavers	ASTM C936	8,000 PSI MIN.	<5%	<500 G/M2	-	L&W: ± 1/16" (1.6mm) H: ± 1/8" (3.18mm)
Slabs	ASTM C1782	8,000 PSI MIN.	<5%	<500 G/M2	> 725 PSI AVG. > 650 PSI MIN.	L&W: ± 1/16" (1.6mm) H: ± 1/8" (3.18mm)

**Results after 49 cycles*

LEED CREDIT OPPORTUNITIES

Unilock products can help contribute to earning points toward LEED certification for your projects. See LEED v5 for more specific project site details when calculating credits.

LEED BD+C: New Construction	
Materials and Resources	Quantify and Assess Embodied Carbon
	Reduce Embodied Carbon Option 2. Environmental Product Declaration (EPD) Analysis
Sustainable Sites	Accessible Outdoor Space
	Enhanced Resilient Site Design
	Heat Island Reduction: Option 1. Nonroof and roof
	Rainwater Management: Option 1. Percentile of Rainfall Events*
LEED O+M: Existing Buildings	
Sustainable Sites	Heat Island Reduction: Option 1. Nonroof and roof

*Rainwater Management - Only contributes to LEED credit if permeable pavers are used.

SUPPORT

Your Unilock representative is here to support you at every stage of your project. Whether you need expert advice, product recommendations, or samples, we're just a call or click away.

Click [here](https://commercial.unilock.com/contact-us/) to connect with your representative or visit commercial.unilock.com/contact-us/