

UMBRIANO[®]



ARCHITECTURAL COLLECTION - PAVERS & SLABS

Umbriano pavers deliver a granite-like appearance ideal for sleek, modern hardscape designs. Their unique mottled surface is created by the random dispersion of granite particles and rich color blends, producing a natural aesthetic with subtle variation. The textured surface achieves a non-slip finish that ensures both beauty and performance in high-traffic environments.



UMBRIANO®

STANDARD SHAPES & SIZES

SHAPE	LENGTH & WIDTH (IMPERIAL)	LENGTH & WIDTH (METRIC)	THICKNESS
36 x 36"	35 1/2 x 35 1/2"	900 x 900mm	3 7/8" (100mm)
24 x 24"	23 5/8 x 23 5/8"	600 x 600mm	2 3/8" (60mm)
			2 3/4" (70mm)
22 1/2 x 37 1/2"	22 1/2 x 37 3/8"	570 x 950mm	2 3/8" (60mm)
21 x 35 1/2"	21 1/4 x 35 1/2"	540 x 900mm	2 3/8" (60mm)
18 x 36"	17 3/4 x 35 1/2"	450 x 900mm	2 3/8" (60mm)
			3 7/8" (100mm)
18 x 24"	17 3/4 x 23 5/8"	450 x 600mm	2 3/8" (60mm)
16 x 16"	15 3/4 x 15 3/4"	400 x 400mm	2 3/4" (70mm)
			3 1/8" (80mm)
			3 7/8" (100mm)
15 x 30"	15 x 29 7/8"	375 x 750mm	2 3/8" (60mm)
12 x 24"	11 7/8 x 23 5/8"	300 x 600mm	2 3/4" (70mm)
			3 7/8" (100mm)
12 x 12"	11 7/8 x 11 7/8"	300 x 300mm	2 3/4" (70mm)
			3 7/8" (100mm)
9 x 9"	9 x 9"	228 x 228mm	2 3/8" (60mm)
8 x 24"	7 7/8 x 23 5/8"	200 x 600mm	2 3/4" (70mm)
			3 7/8" (100mm)
8 x 16"	7 7/8 x 15 3/4"	200 x 400mm	2 3/4" (70mm)
			3 7/8" (100mm)
8 x 8"	7 7/8 x 7 7/8"	200 x 200mm	2 3/8" (60mm)
			2 3/4" (70mm)
7 1/2 x 15"	7 1/2 x 15"	190 x 380mm	2 3/8" (60mm)
			3 1/8" (80mm)
7 x 14"	7 1/16 x 14 3/16"	180 x 360mm	2 3/8" (60mm)
			2 3/4" (70mm)
			3 1/8" (80mm)
6 x 24"	5 15/16 x 23 5/8"	150 x 600mm	2 3/4" (70mm)
6 x 12"	5 15/16 x 11 7/8"	150 x 300mm	2 3/4" (70mm)
			3 1/8" (80mm)
			3 7/8" (100mm)

SHAPE	LENGTH & WIDTH (IMPERIAL)	LENGTH & WIDTH (METRIC)	THICKNESS
6 x 6"	5 15/16 x 5 15/16"	150 x 150mm	2 3/4" (70mm)
4 x 16"	3 7/8 x 15 3/4"	100 x 400mm	2 3/4" (70mm)
			3 7/8" (100mm)
4 x 12"	3 7/8 x 11 7/8"	100 x 300mm	2 3/4" (70mm)
			3 7/8" (100mm)
4 x 8"	3 7/8 x 7 7/8"	100 x 200mm	2 3/8" (60mm)
			2 3/4" (70mm)
			3 1/8" (80mm)
3 x 12"	2 15/16 x 11 7/8"	75 x 300mm	3 7/8" (100mm)
2 3/8 x 9 1/2"	2 3/8 x 9 1/2"	60 x 240mm	2 3/8" (60mm)
			2 3/4" (70mm)
Load Lock™ - 12 x 24"	11 7/8 x 23 5/8"	300 x 600mm	3 7/8" (100mm)
Load Lock™ - 12 x 12"	11 7/8 x 11 7/8"	300 x 300mm	3 7/8" (100mm)
Load Lock™ - 6 x 12"	5 15/16 x 11 7/8"	150 x 300mm	3 7/8" (100mm)
			6" (150mm)
Load Lock™ - 4 x 12"	3 7/8 x 11 7/8"	100 x 300mm	3 7/8" (100mm)
Metro™ - 5 x 10"	5 x 10"	127 x 254mm	2 3/4" (70mm)
Nordic Cobble™	3 5/8 x 3 3/4"	89.9 x 94mm	2 3/8" (60mm)
Trapezoid - 9 x 15"	9 x 15"	228 x 381mm	3 1/8" (80mm)
Hex™ - 8"	7 7/8 x 7 7/8"	200 x 200mm	2 3/4" (70mm)
Optiloc™	10 1/4 x 10 1/4"	260 x 260mm	3 1/8" (80mm)
Artline™ Platform	4 7/8 x 6 3/4, 4 7/8 x 10 3/8, 4 7/8 x 13 3/8, 4 7/8 x 17 3/4, 7 1/2 x 8 7/8, 7 1/2 x 13 3/8, 7 1/2 x 17 3/4"	125 x 169, 125 x 262.5, 125 x 337.5, 125 x 450, 187.5 x 225, 187.5 x 337.5, 187.5 x 450mm	2 3/4" (70mm)
Metro™ Platform	5 x 10, 10 x 10, 10 x 15"	127 x 254, 254 x 254, 254 x 380mm	2 3/4" (70mm)
Random Platform 1	7 1/2 x 15, 15 x 15, 15 x 22 1/2"	190 x 380, 380 x 380, 380 x 570mm	2 3/8" (60mm)
			3 1/8" (80mm)
Random Platform 2	7 x 14, 14 x 14, 14 x 21"	180 x 360, 360 x 360, 360 x 540mm	2 3/8" (60mm)
			3 1/8" (80mm)
Tribeca Cobble™ Platform	5 x 6 7/8, 5 x 9, 5 x 12"	130 x 175, 130 x 230, 130 x 305mm	2 3/4" (70mm)

UMBRIANO®

PERMEABLE SHAPES & SIZES

SHAPE	LENGTH & WIDTH (IMPERIAL)	LENGTH & WIDTH (METRIC)	THICKNESS	JOINT SPACING	VOID PERCENTAGE
Eco-Priora™ - 10 x 10"	9 1/2 x 9 1/2"	240 x 240mm	3 1/8" (80mm)	7mm	4.6%
Eco-Priora™ - 5 x 10"	4 3/4 x 9 1/2"	120 x 240mm	3 1/8" (80mm)	7mm	6.8%
Eco-Priora™ - 5 x 5"	4 3/4 x 4 3/4"	120 x 120mm	3 1/8" (80mm)	6mm	12.80%
Permeable - 12 x 12"	11 7/8 x 11 7/8"	150 x 600mm	3 7/8" (100mm)	7mm	4.84%
Permeable - 6 x 24"	5 15/16 x 23 5/8"	150 x 600mm	2 3/4" (70mm)	10mm	6.23%
Permeable - 6 x 12"	5 15/16 x 11 7/8"	152.4 x 304.8mm	3 1/8" (80mm)	10mm	10.65%
Permeable - 4 x 16"	3 7/8 x 15 3/4"	100 x 400mm	3 7/8" (100mm)	7mm	10.12%
Permeable - 4 x 12"	3 7/8 x 11 7/8"	100 x 300mm	3 1/8" (80mm)	7mm	8.6%
Permeable - 3 x 12"	2 15/16 x 11 7/8"	75 x 300mm	3 7/8" (100mm)	7mm	10.12%
Treo® - 4 5/8 x 9 1/4"	4 5/8 x 9 1/4"	116.5 x 233mm	2 3/8" (60mm)	7mm	7.8%
Permeable Hex - 8"			2 3/8" (60mm)	6.5mm	4.2%
			3 1/8" (80mm)	10mm	4.2%
Nordic Cobble™	3 5/8 x 3 3/4"	89.9 x 94mm	2 3/8" (60mm)	-	-
Eco-Optiloc™	9 7/8 x 9 7/8"	250 x 250mm	3 1/8" (80mm)	12mm	7.3%
Treo® Platform	9 1/4 x 4 5/8, 9 1/4 x 9 1/4, 9 1/4 x 13 3/4"	233 x 116, 233 x 233, 233 x 349mm	2 3/8" (60mm)	7mm	5.5% avg.
			3 1/8" (80mm)	7mm	5.5% avg.
Thornbury™ Platform	8 1/4 x 6 7/8, 8 1/4 x 13 3/4, 13 3/4 x 16 1/2"	210 x 173, 210 x 350, 350 x 420mm	2 3/4" (70mm)	11-18mm	7.7% avg.
Eco-Line® Platform	3 5/16 x 9 3/8, 3 5/16 x 11, 3 5/16 x 12 1/2, 3 5/16 x 14, 4 1/2 x 11, 14 1/2 x 12 1/2, 4 1/2 x 14"	84 x 237, 84 x 277, 84 x 317, 84 x 357, 114 x 237, 114 x 277, 114 x 317, 114 x 357mm	3 7/8" (100mm)	6.25mm	5.8%
Tribeca Cobble™ Platform	5 x 6 7/8, 5 x 9, 5 x 12"	130 x 175, 130 x 230, 130 x 305mm	2 3/4" (70mm)	9-15mm	5.6% avg.

STANDARD

SHAPE	LENGTH & WIDTH (IMPERIAL)	LENGTH & WIDTH (METRIC)	THICKNESS
12 x 12"	11 ⁷ / ₈ x 11 ⁷ / ₈ "	300 x 300mm	3 ⁷ / ₈ " (100mm)
8 x 8"	7 ⁷ / ₈ x 7 ⁷ / ₈ "	200 x 200mm	2 ³ / ₄ " (70mm)
6 x 12"	5 ¹⁵ / ₁₆ x 11 ⁷ / ₈ "	150 x 300mm	3 ⁷ / ₈ " (100mm)
6 x 6"	5 ¹⁵ / ₁₆ x 5 ¹⁵ / ₁₆ "	150 x 150mm	2 ³ / ₄ " (70mm)
4 x 12"	3 ⁷ / ₈ x 11 ⁷ / ₈ "	100 x 300mm	3 ⁷ / ₈ " (100mm)
4 x 8"	3 ⁷ / ₈ x 7 ⁷ / ₈ "	100 x 200mm	2 ³ / ₄ " (70mm)
			3 ¹ / ₈ " (80mm)
3 x 12"	2 ¹⁵ / ₁₆ x 11 ⁷ / ₈ "	75 x 300mm	3 ⁷ / ₈ " (100mm)
Load Lock™ - 12 x 24"	11 ⁷ / ₈ x 23 ⁵ / ₈ "	300 x 600mm	3 ⁷ / ₈ " (100mm)
Load Lock™ - 12 x 12"	11 ⁷ / ₈ x 11 ⁷ / ₈ "	300 x 300mm	3 ⁷ / ₈ " (100mm)
Load Lock™ - 6 x 12"	5 ¹⁵ / ₁₆ x 11 ⁷ / ₈ "	150 x 300mm	3 ⁷ / ₈ " (100mm)
			6" (150mm)
Load Lock™ - 4 x 12"	3 ⁷ / ₈ x 11 ⁷ / ₈ "	100 x 300mm	3 ⁷ / ₈ " (100mm)
Hex™ - 8"	7 ⁷ / ₈ x 7 ⁷ / ₈ "	200 x 200mm	2 ³ / ₄ " (70mm)
Optiloc™	10 ¹ / ₄ x 10 ¹ / ₄ "	260 x 260mm	3 ¹ / ₈ " (80mm)

PERMEABLE

SHAPE	LENGTH & WIDTH (IMPERIAL)	LENGTH & WIDTH (METRIC)	THICKNESS	JOINT SPACING	VOID PERCENTAGE
Eco-Priora™ - 10 x 10"	9 ¹ / ₂ x 9 ¹ / ₂ "	240 x 240mm	3 ¹ / ₈ " (80mm)	7mm	4.6%
Eco-Priora™ - 5 x 10"	4 ³ / ₄ x 9 ¹ / ₂ "	120 x 240mm	3 ¹ / ₈ " (80mm)	7mm	6.80%
Eco-Priora™ - 5 x 5"	4 ³ / ₄ x 4 ³ / ₄ "	120 x 120mm	3 ¹ / ₈ " (80mm)	6mm	12.80%
Permeable - 12x 12"	11 ⁷ / ₈ x 11 ⁷ / ₈ "	300 x 300mm	3 ⁷ / ₈ " (100mm)	7mm	4.84%
Permeable - 3 x 12"	2 ¹⁵ / ₁₆ x 11 ⁷ / ₈ "	75 x 300mm	3 ⁷ / ₈ " (100mm)	7mm	10.12%
Permeable Hex - 8"	8 ¹ / ₁₆ x 8 ¹ / ₁₆ "	205 x 205mm	2 ³ / ₈ " (60mm)	6.5mm	4.2%
			3 ¹ / ₈ " (80mm)	10mm	4.2%
Eco-Optiloc™	9 ⁷ / ₈ x 9 ⁷ / ₈ "	250 x 250mm	3 ¹ / ₈ " (80mm)	12mm	7.3%

UMBRIANO[®]

ROOF DECK SLABS SHAPES & SIZES

SHAPE	LENGTH & WIDTH (IMPERIAL)	LENGTH & WIDTH (METRIC)	THICKNESS
24 x 24"	23 ⁵ / ₈ x 23 ⁵ / ₈ "	600 x 600mm	2 ³ / ₈ " (60mm)
22 ¹ / ₂ x 37 ¹ / ₂ "	22 ¹ / ₂ x 37 ³ / ₈ "	570 x 950mm	2 ³ / ₈ " (60mm)
21 x 35 ¹ / ₂ "	21 ¹ / ₄ x 35 ¹ / ₂ "	540 x 900mm	2 ³ / ₈ " (60mm)
18 x 36"	17 ³ / ₄ x 35 ¹ / ₂ "	450 x 900mm	2 ³ / ₈ " (60mm)
18 x 24"	17 ³ / ₄ x 23 ⁵ / ₈ "	450 x 600mm	2 ³ / ₈ " (60mm)
15 x 30"	15 x 29 ⁷ / ₈ "	375 x 750mm	2 ³ / ₈ " (60mm)

UMBRIANO®

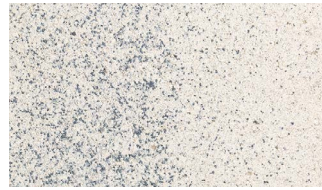
COLORS



GRENADE WHITE (SRI 52 | SR 0.45)



POLAR SKY



POLAR STORM



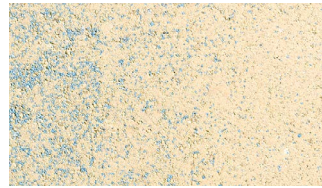
ARCTIC TUNDRA



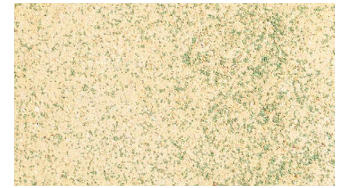
WINTER MARVEL (SRI 38 | SR 0.35)



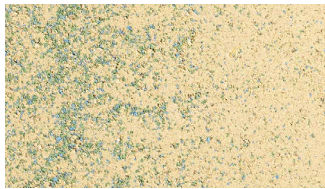
SUMMER WHEAT (SRI 42 | SR 0.48)



COASTAL SHORE



EMERALD BEACH



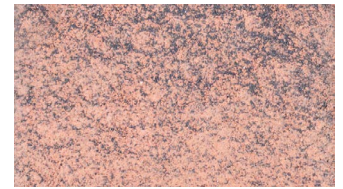
SANDY SEA GLASS



HARVEST BROWN



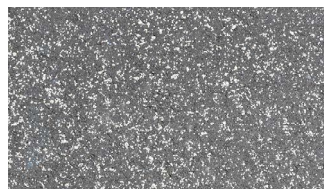
AUTUMN SUNSET (SRI 32 | SR 0.30)



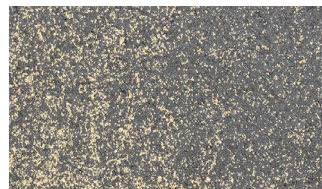
SUMMER ROSE (SRI 28 | SR 0.27)



FRENCH GREY (SRI 17 | SR 0.18)



STARRY NIGHT



URBAN NIGHTFALL



MIDNIGHT SKY (SRI 15 | SR 0.17)

Colors may vary by plant of manufacture. Final product selection should be done with full size samples and mock-ups. Contact your Unilock Representative for details.

UNILOCK®

TECHNOLOGIES

INCLUDED: EnduraColor™ Face-mix | EasyClean™ Integral Factory Sealer

MANUFACTURING STANDARDS

Unilock meets and exceeds ASTM C936 - Standard Specification for Solid Concrete Interlocking Paving Units & C1782 - Standard Specification for Segmental Concrete Paving Slabs using test methods conforming to:

TYPE	ASTM	COMPRESSIVE STRENGTH	WATER ABSORPTION	FREEZE/THAW (49 CYCLES)	FLEXURAL STRENGTH	DIMENSIONAL ACCURACY
Pavers	ASTM C936	8,000 PSI MIN.	<5%	<500 G/M2	-	L&W: ± 1/16" (1.6mm) H: ± 1/8" (3.18mm)
Slabs	ASTM C1782	8,000 PSI MIN.	<5%	<500 G/M2	> 725 PSI AVG. > 650 PSI MIN.	L&W: ± 1/16" (1.6mm) H: ± 1/8" (3.18mm)

LEED CREDIT OPPORTUNITIES

Unilock products can help contribute to earning points toward LEED certification for your projects. See LEED v5 for more specific project site details when calculating credits.

LEED BD+C: New Construction	
Materials and Resources	Quantify and Assess Embodied Carbon
	Reduce Embodied Carbon Option 2. Environmental Product Declaration (EPD) Analysis
Sustainable Sites	Accessible Outdoor Space
	Enhanced Resilient Site Design
	Heat Island Reduction: Option 1. Nonroof and roof
	Rainwater Management: Option 1. Percentile of Rainfall Events*
LEED O+M: Existing Buildings	
Sustainable Sites	Heat Island Reduction: Option 1. Nonroof and roof

*Only contributes to LEED credit if permeable pavers are used.

SUPPORT

Your Unilock representative is here to support you at every stage of your project. Whether you need expert advice, product recommendations, or samples, we're just a call or click away.

Click [here](https://commercial.unilock.com/contact-us/) to connect with your representative or visit commercial.unilock.com/contact-us/