



The SkyView Wind Uplift System is an innovative solution with a **patent-pending design** that is engineered to lock down pedestal pavers in high-wind environments. This system combines the SkyView Wind Uplift Kit, SkyView Pedestals or Wind Uplift Waffles, and specialized Unilock Wind Uplift Slabs to create a robust, invisible tie-down mechanism that secures slabs in place and resists wind uplift pressures, without compromising project aesthetics.

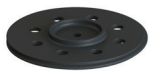
Wind Uplift System Components

- 1 | Skyview Wind Uplift Kit
- 2 | SkyView Pedestal System
- 3 | SkyView Low-Profile Wind Uplift Waffles
- 4 | Unilock Wind Uplift Slabs

1 | SkyView Wind Uplift Kit

The **patent-pending** Wind Uplift Kit includes a Puck, Keyway Lockdown Bar, and Screw, which can be easily added to the SkyView Pedestal System or SkyView Low-Profile Wind Uplift Waffles. Together, they form a tie-down mechanism designed to work seamlessly with our Unilock Wind Uplift Slabs.

- ✓ Invisible tie-down
- ✓ Removable and reusable components to allow for easy access to utilities and structures beneath the surface
- ✓ Allows for rafting of the paving surface



PUCK
D: 4.42", H: 0.7"
D: 112.3, H: 17.8mm

The puck screws into the top of the pedestal, providing a secure point for attaching the keyway lockdown bar.



KEYWAY LOCKDOWN BAR
L: 2.55", W: 1", H: 0.67"
L: 64.8, W: 25.4, H: 17mm

This dovetail-shaped bar locks into the undercut channel of the wind uplift slabs, anchoring them to the pedestals or wind uplift waffles.



SCREW
L: 2" (50.8mm)

The screw is used to fasten the keyway lockdown bar to the puck or threaded insert of the wind uplift waffles.

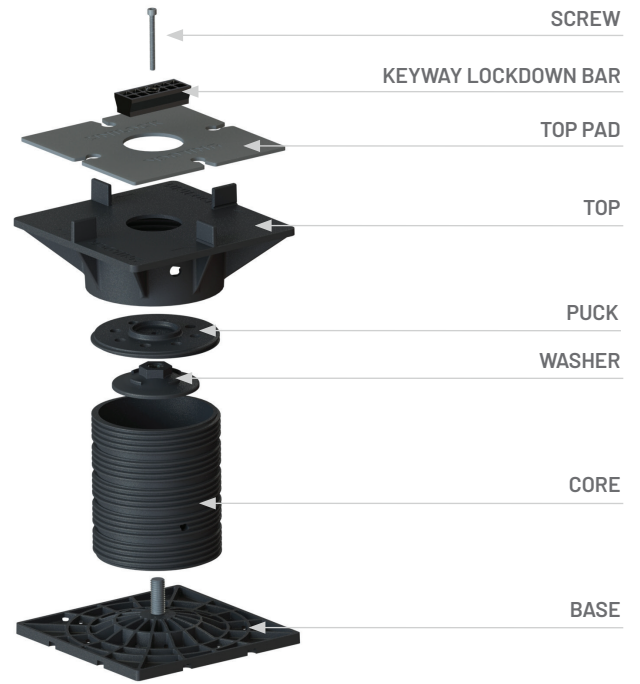


SKYVIEW WIND UPLIFT SYSTEM

2 | SkyView Pedestal System

Unilock SkyView Pedestals are **patent pending**, fully adjustable structural supports for elevating paving materials. Our pedestals ensure unmatched flexibility, ease of installation and durability. The Wind Uplift Kit is easily added to the pedestal assembly to accommodate for wind.

- ✓ Unique patent-pending design
- ✓ Adjustable heights from 3" to 31" without cross-bracing
- ✓ Slope compensation up to 6%
- ✓ Orbital socket for ease of leveling
- ✓ Large footprint to provide stability
- ✓ Consistent slab alignment with 3/16" spacer tabs
- ✓ Resistant to water, mold, and freeze/thaw cycles
- ✓ Manufactured from up to 90% recycled polypropylene
- ✓ Miami-Dade County & Florida Product Approval Pending



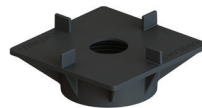
PEDESTAL COMPONENTS



BASE
L: 7", W: 7", H: 0.38"
L: 177.8, W: 177.8, H: 9.6mm



WASHER
D: 3"
D: 76.2mm



TOP
L: 7", W: 7", H: 2.25"
L: 177.8, W: 177.8, H: 57.2mm

PEDESTAL STANDARD KIT



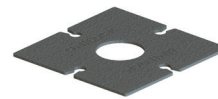
COLLAR
D: 4.75", H: 2.3"
D: 120.7, H: 58.4mm



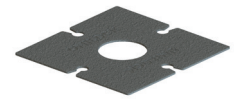
5" CORE
D: 4.43", H: 5"
D: 112.5, H: 127mm



10" CORE
D: 4.43", H: 10"
D: 112.5, H: 254mm



1/8" TOP PAD (optional)
L: 6.5", W: 6.5", H: 0.13"
L: 165.1, W: 165.1, H: 3.3mm



1/16" TOP PAD (optional)
L: 6.5", W: 6.5", H: 0.06"
L: 165.1, W: 165.1, H: 1.6mm

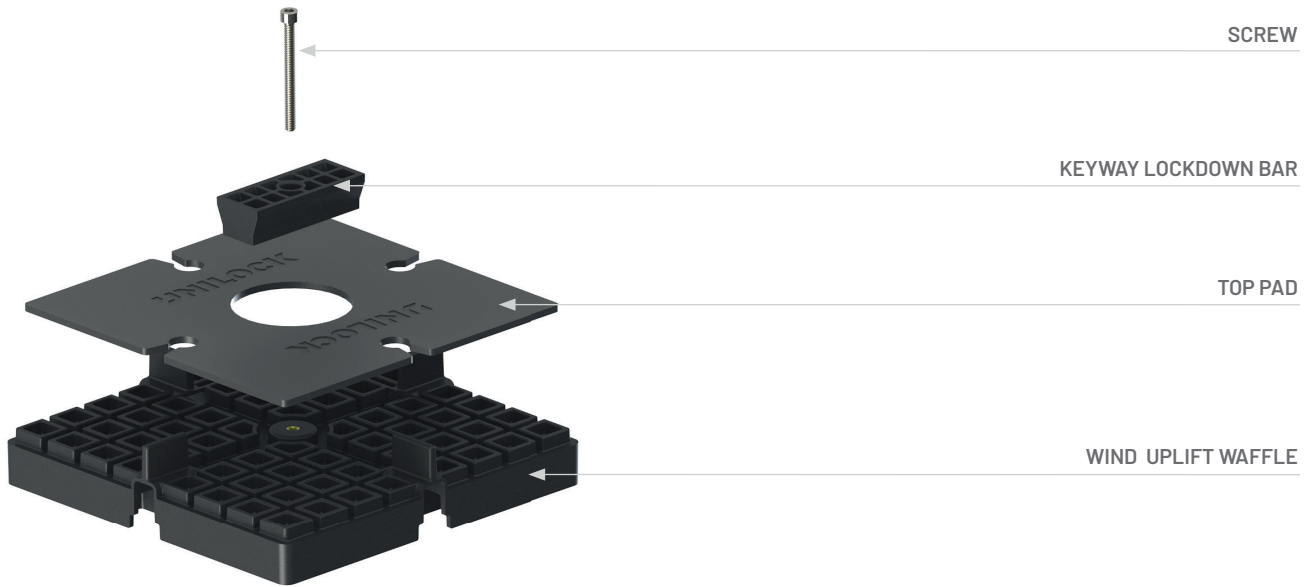
L: Length, W: Width, D: Outside Diameter, H: Height
Height measurement for Top, 1/2" Waffle and 1" Waffle do not include the height of the spacer tabs.



SKYVIEW WIND UPLIFT SYSTEM

3 | SkyView Low-Profile Wind Uplift Waffles

Specifically designed for roof deck installations with minimal elevation, SkyView Wind Uplift Waffles are **patent-pending**, specialized pedestals that raise surfaces from a 1/2 inch to 2 1/2 inches while helping to combat wind uplift pressure. Their compact, high-strength design provides exceptional stability and load distribution, making them ideal for tight spaces and areas with limited height clearance. These waffles have a threaded insert in the center to allow for the Keyway Lockdown Bar to be secured with the screw.

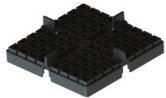


- ✓ Stackable heights from 1/2" to 2 1/2"
- ✓ Large footprint to provide stability
- ✓ Miami-Dade County & Florida Product Approval Pending
- ✓ Resistant to water, mold, and freeze/thaw cycles
- ✓ Consistent slab alignment with 3/16" spacer tabs
- ✓ Manufactured from 90% recycled polypropylene

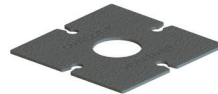
COMPONENTS



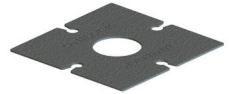
1/2" WIND UPLIFT WAFFLE
 L: 7", W: 7", H: 0.5"
 L: 177.8, W: 177.8, H: 12.7mm



1" WIND UPLIFT WAFFLE
 L: 7", W: 7", H: 1"
 L: 177.8, W: 177.8, H: 25.4mm



1/8" TOP PAD (optional)
 L: 6.5", W: 6.5", H: 0.13"
 L: 165.1, W: 165.1, H: 3.3mm



1/16" TOP PAD (optional)
 L: 6.5", W: 6.5", H: 0.06"
 L: 165.1, W: 165.1, H: 1.6mm

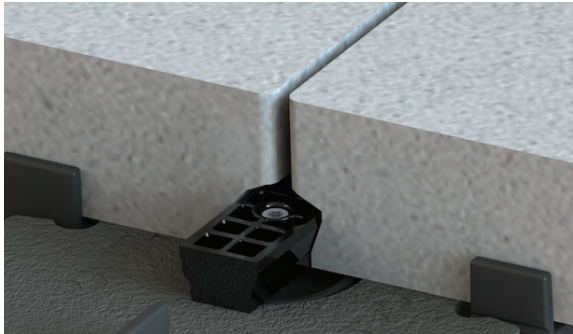
L: Length, W: Width, H: Height
 Height measurement for Top, 1/2" Waffle and 1" Waffle do not include the height of the spacer tabs.



SKYVIEW WIND UPLIFT SYSTEM

4 | Wind Uplift Slabs

Unilock Wind Uplift Slabs are a key component of the SkyView Wind Uplift System. These **patent-pending**, 2" thick concrete slabs work in combination with the SkyView Wind Uplift Kit and either SkyView Pedestals or Wind Waffles to create a rafted paving surface that resists uplift forces. Available in a wide range of finishes and colors, they also provide the creative flexibility needed to meet your design vision in high-wind environments.



- ✓ 2" thickness for reduced weight, easier material handling and decreased shipping costs

- ✓ Continuous undercut channel enhances design flexibility, allowing for the installation of running bond patterns at multiple offsets

- ✓ When on-site cutting is required, the functionality of the system remains without the need for additional fabrication to the slab

- ✓ Available with EasyClean™ Stain Resistance Technology

FINISHES



PREMIER
EnduraColor™ Facemix



REVELA™
EnduraColor™ Facemix



CLASSIC
Thrumix

COLORS



STERLING
(SRI 46 | SR 0.41)



SILVER GREY
(SRI 37 | SR 0.34)



CHAMOIS
(SRI 46 | SR 0.41)



SANDY BEIGE
(SRI 42 | SR 0.38)

SIZES



L: 24", W: 36", H: 2"
L: 604.8, W: 909.6, H: 51mm
*Offered with a false joint at 24"



L: 24", W: 24", H: 2"
L: 604.8, W: 604.8, H: 51mm

L: Length, W: Width, H: Height