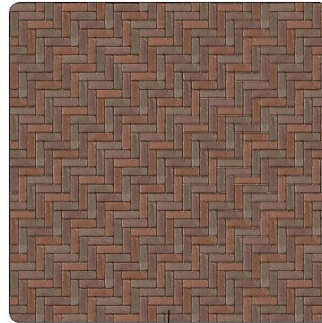




Paver - Concrete - Unilock - 2-5/8" x 7-7/8" x 2-3/8" - Basketweave - Copthorne - BC/BR/OO Blend - Reala Historic Timeworn Finish



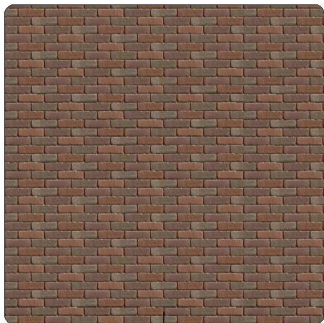
Paver - Concrete - Unilock - 2-5/8" x 7-7/8" x 2-3/8" - Basketweave - Copthorne - Basalt - Reala Historic Timeworn Finish



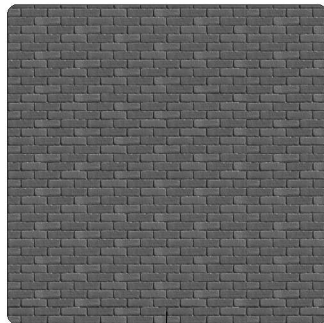
Paver - Concrete - Unilock - 2-5/8" x 7-7/8" x 2-3/8" - Herringbone - Copthorne - BC/BR/OO Blend - Reala Historic Timeworn Finish



Paver - Concrete - Unilock - 2-5/8" x 7-7/8" x 2-3/8" - Herringbone - Copthorne - Basalt - Reala Historic Timeworn Finish



Paver - Concrete - Unilock - 2-5/8" x 7-7/8" x 2-3/8" - Running Bond - Copthorne - Blend - Reala Historic Timeworn Finish



Paver - Concrete - Unilock - 2-5/8" x 7-7/8" x 2-3/8" - Running Bond - Copthorne - Basalt - Reala Historic Timeworn Finish



**HOW TO  
TRANSFER  
MATERIALS**



**HOW TO  
RELINK  
MATERIALS**

## UNILOCK

NEW ENGLAND, NEW YORK, MID-ATLANTIC, OHIO VALLEY, MIDWEST, ONTARIO, QUEBEC  
1-800-UNILOCK  
[HTTPS://UNILOCK.COM/CONTACTS/](https://unilock.com/contacts/)  
[HTTPS://UNILOCK.COM/](https://unilock.com/)

**UNILOCK**<sup>®</sup>  
DESIGNED TO CONNECT.™